



# COMUNE DI LATINA

AREA OO.PP.  
Servizio Manutenzioni

## PROGETTO ESECUTIVO RIFACIMENTO DI PAVIMENTAZIONI STRADALI E MARCIAPIEDI DICEMBRE 2015

### DESCRIZIONE

# REPORT FOTOGRAFICO

Progettazione:

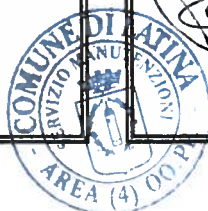
Responsabile Unico  
del Procedimento:

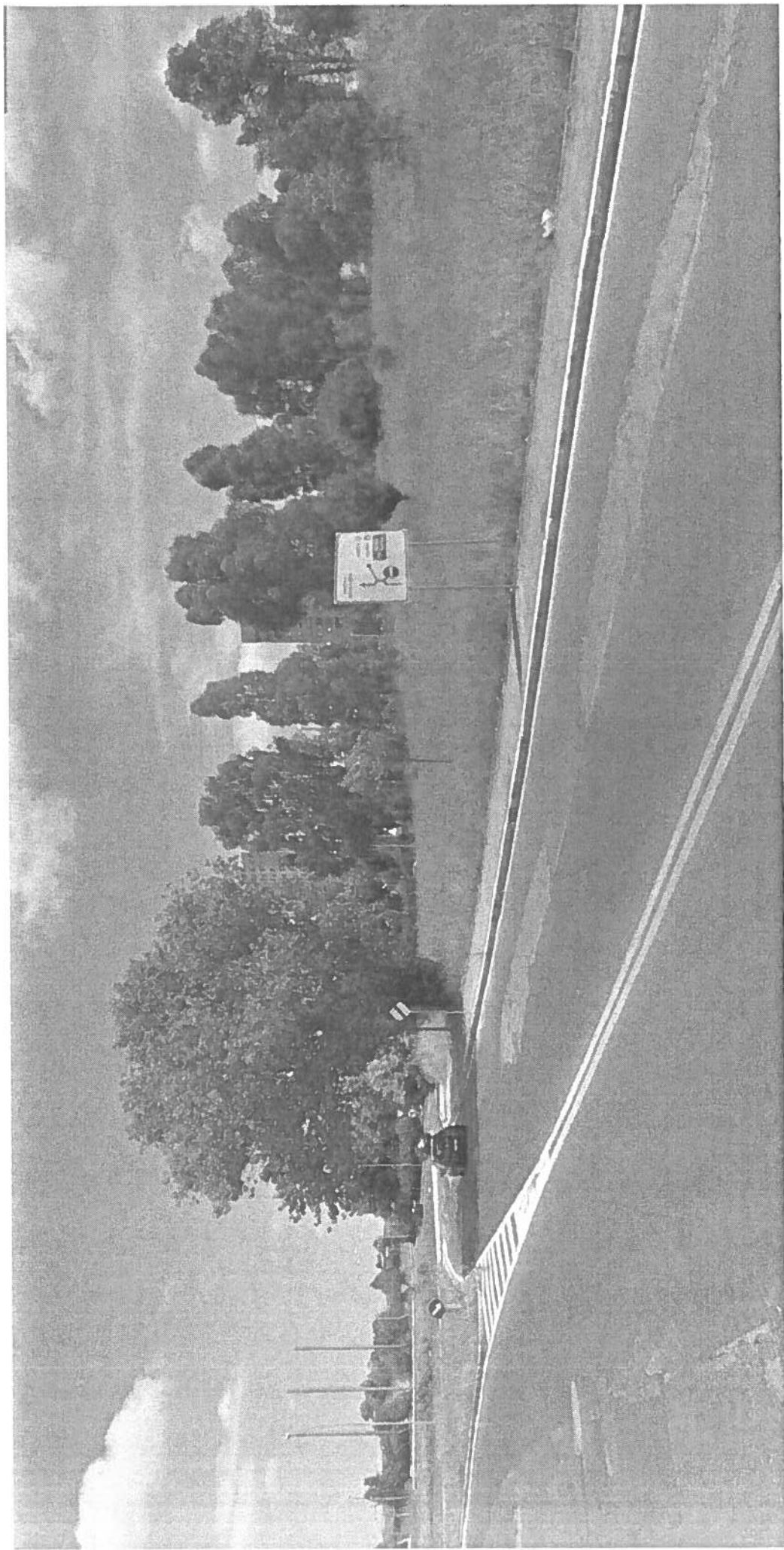
**Ing. Paolo Rossi**

Visto il Dirigente:

**IL DIRIGENTE**  
*Ing. Lorenzo Le Donne*

Data: **dicembre 2015**





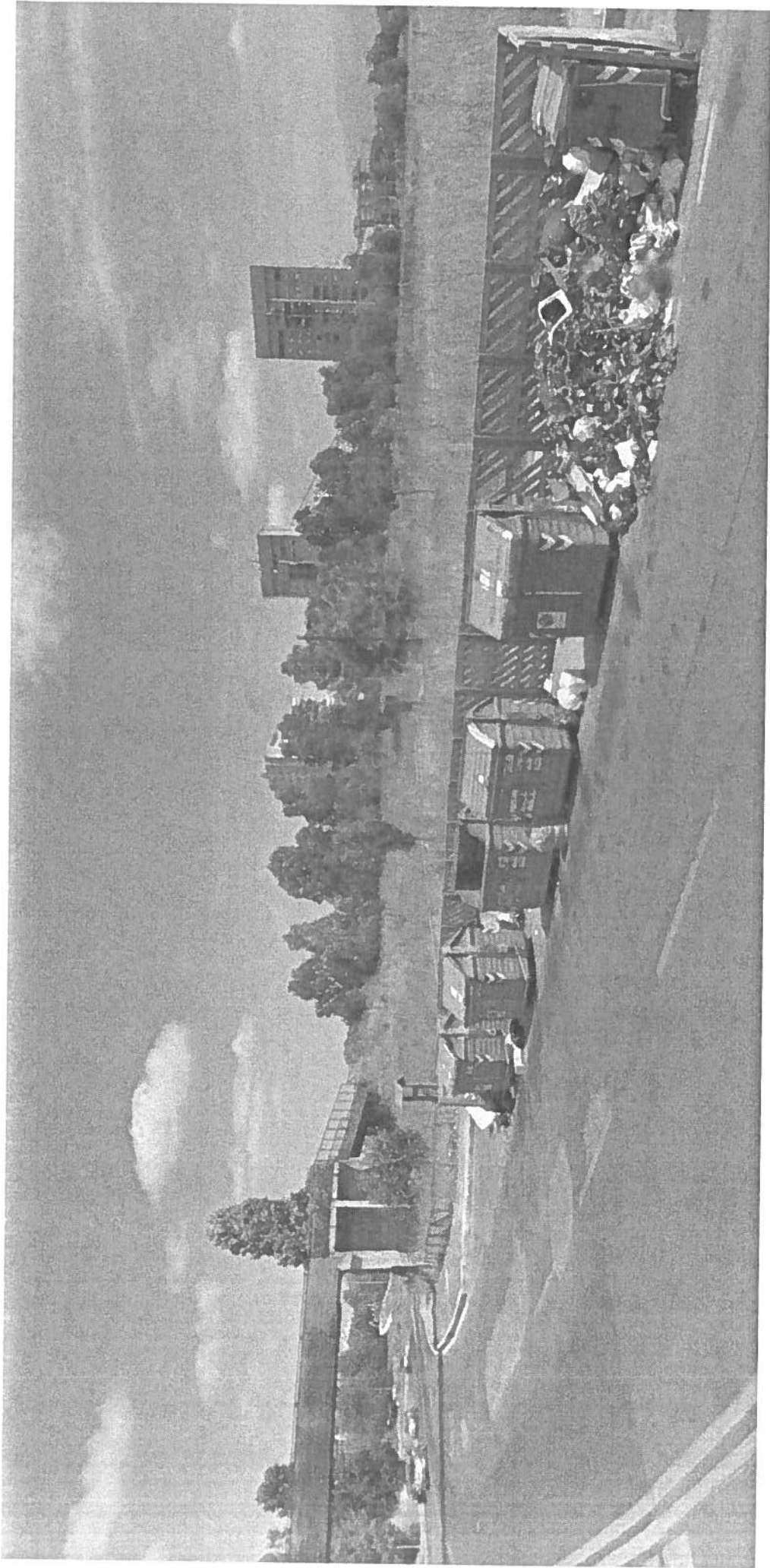
— VIACE POGANJANI DIREKTORE JNOVA VSTIJA

10. 11. 2015



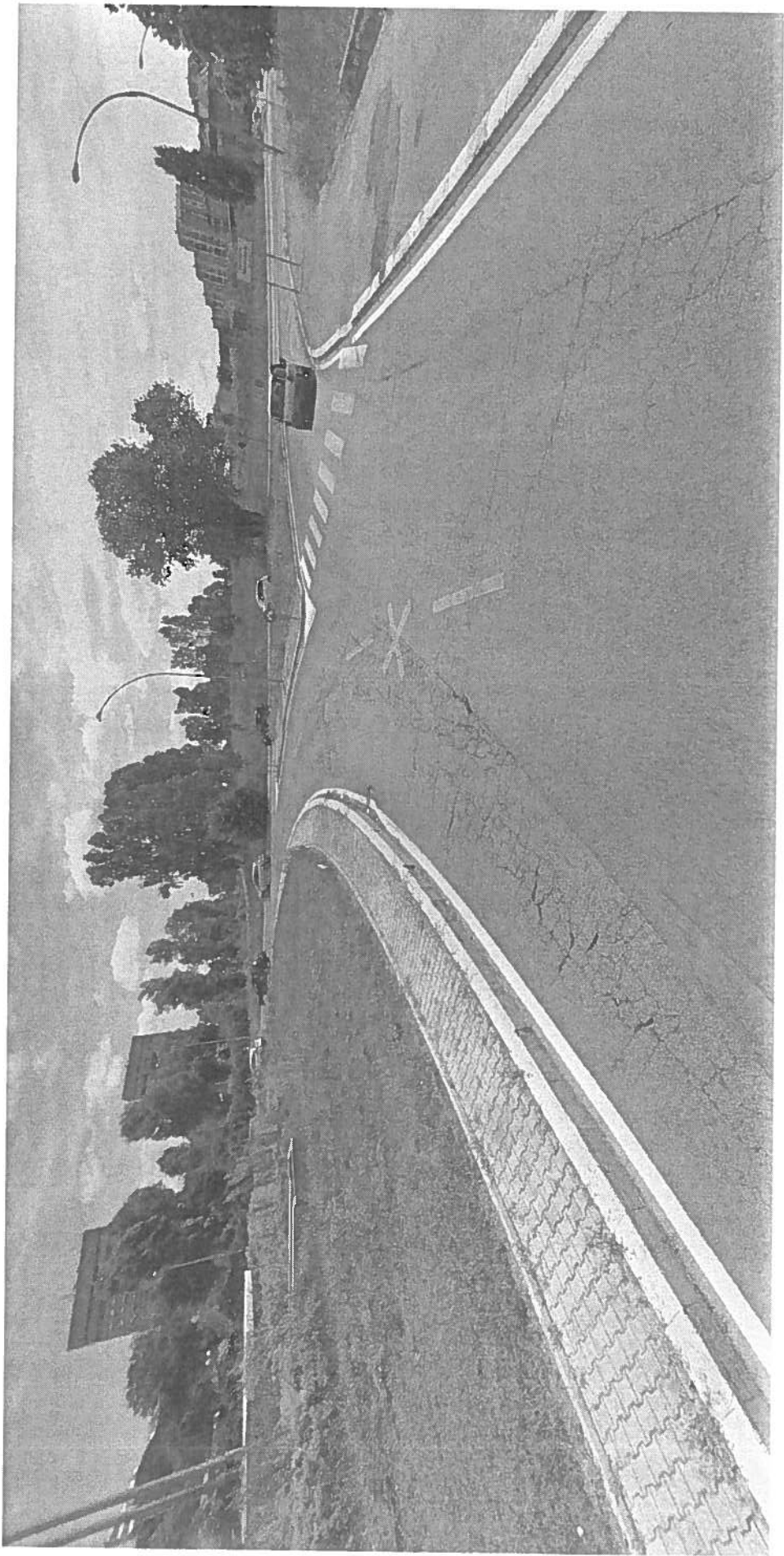
-VIALE PASQUINI

10.11.2015

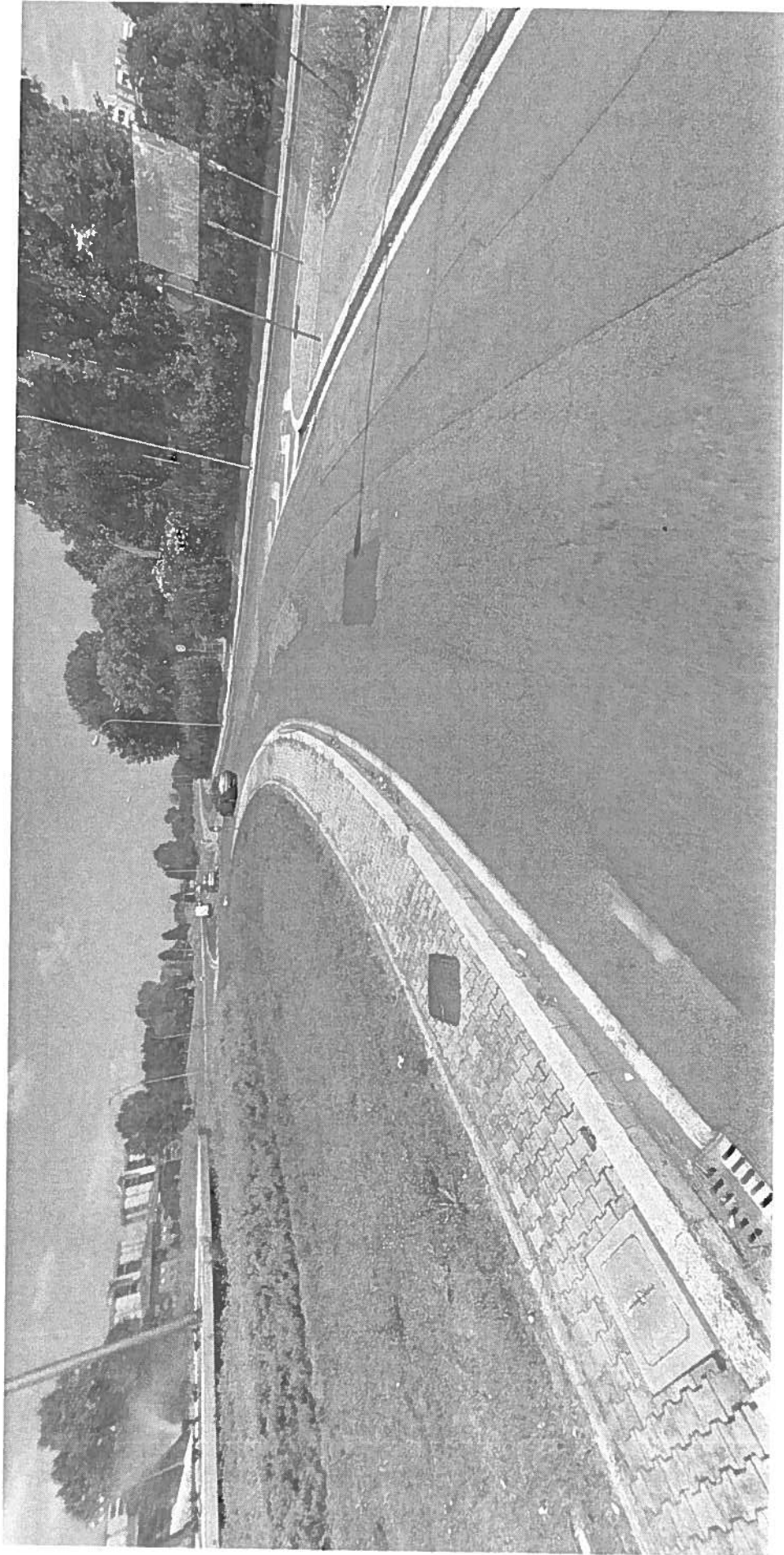


- VILNĖ PASAUSINĖI BE UKO BOPREDAVIMO

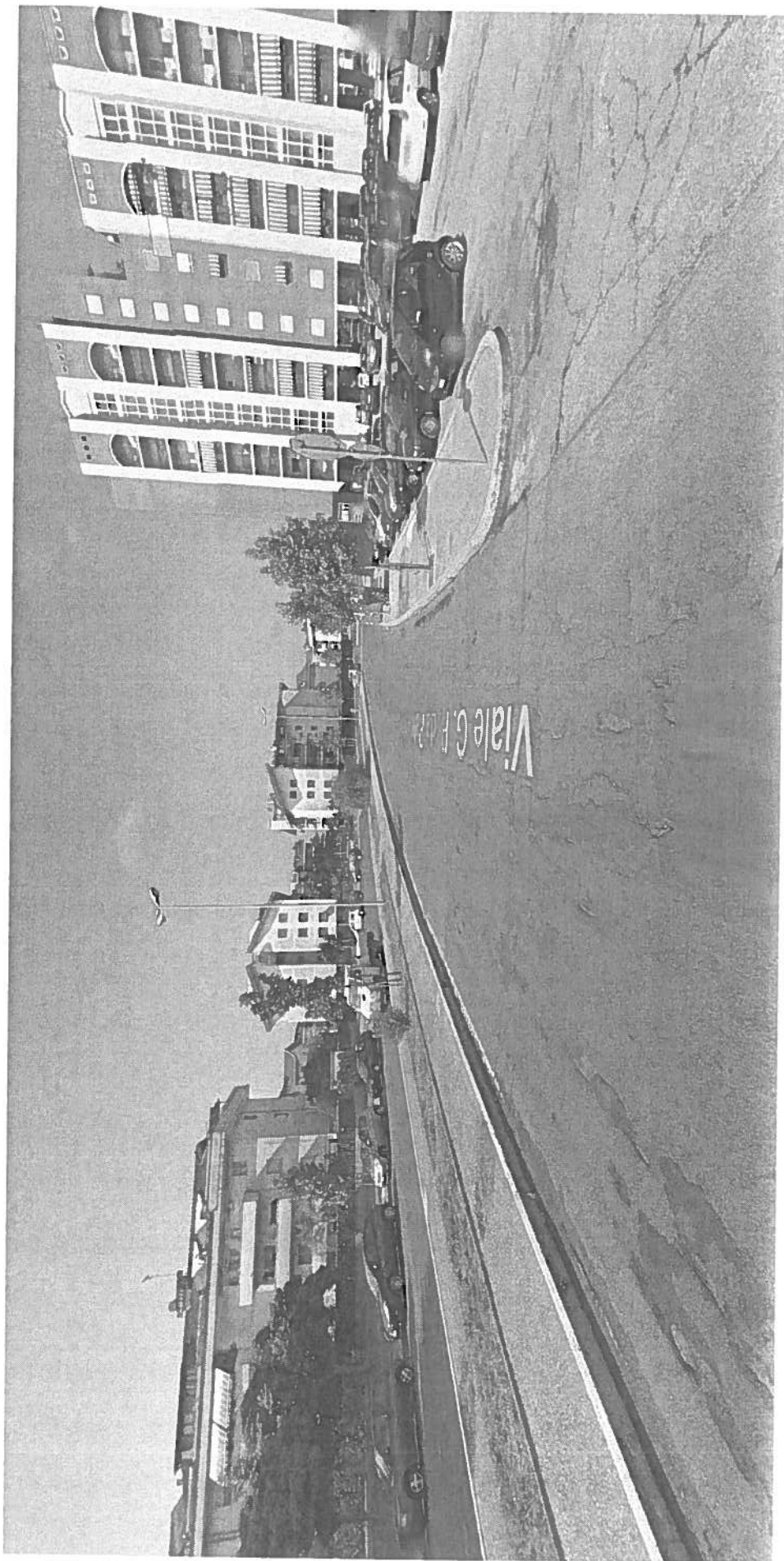
10.11.2015



ROTONDA VIALE P.L. DA PALESTRINA - INCROCIO VIALE P.L. NERVI



ROTONDA VIALE P. L. DA PALESTRINA - INTERCORSO VIALE NARVI



VIALE P. L. DA PALESTINA (DA LARGO COSTI)