



COMUNE DI LATINA

AREA OO.PP.
Servizio Manutenzioni

PROGETTO ESECUTIVO MANUTENZIONE STRAORDINARIA-LAVORI DI RIFACIMENTO TRATTI DI MANTO STRADALE NEI BORGHI

DESCRIZIONE

DOCUMENTAZIONE FOTOGRAFICA

Progettazione:

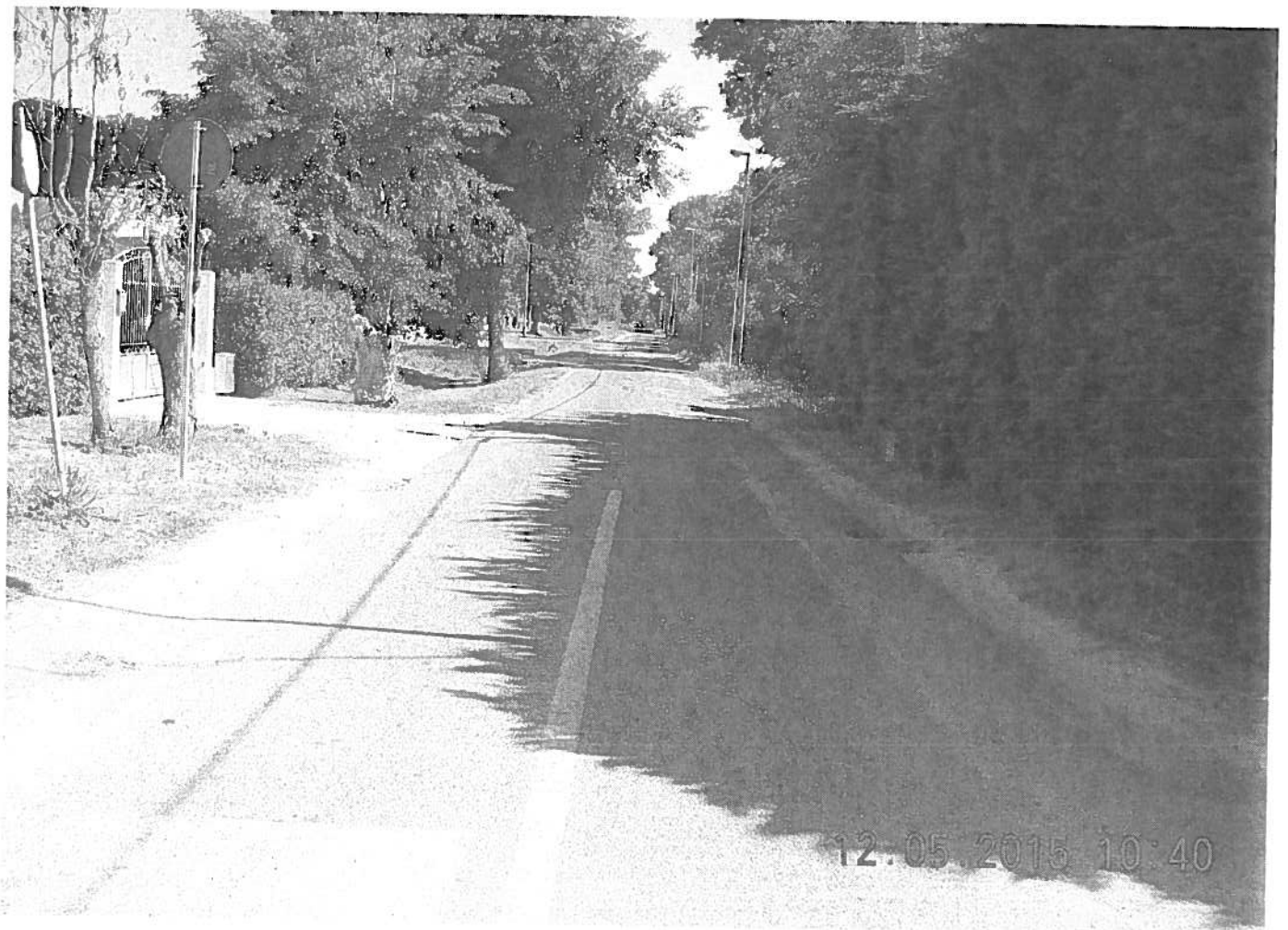
Il Funzionario Direttivo
Dott. Ing. Paolo Rossi

Responsabile Unico
del Procedimento:

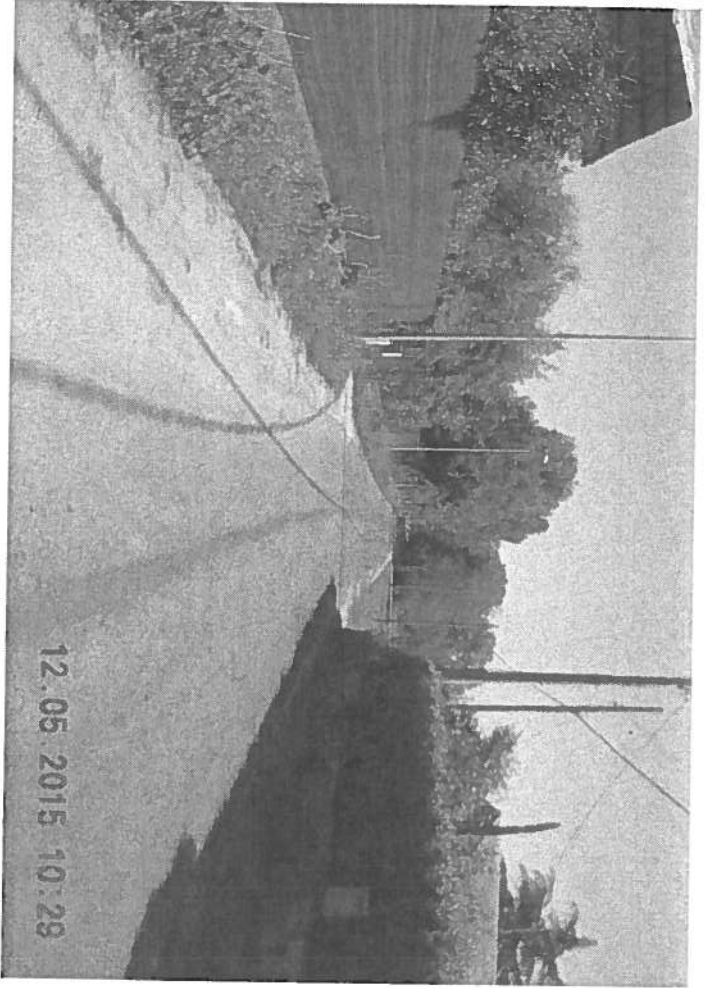
Ing. Paolo Rossi

Il Direttore dei Lavori:

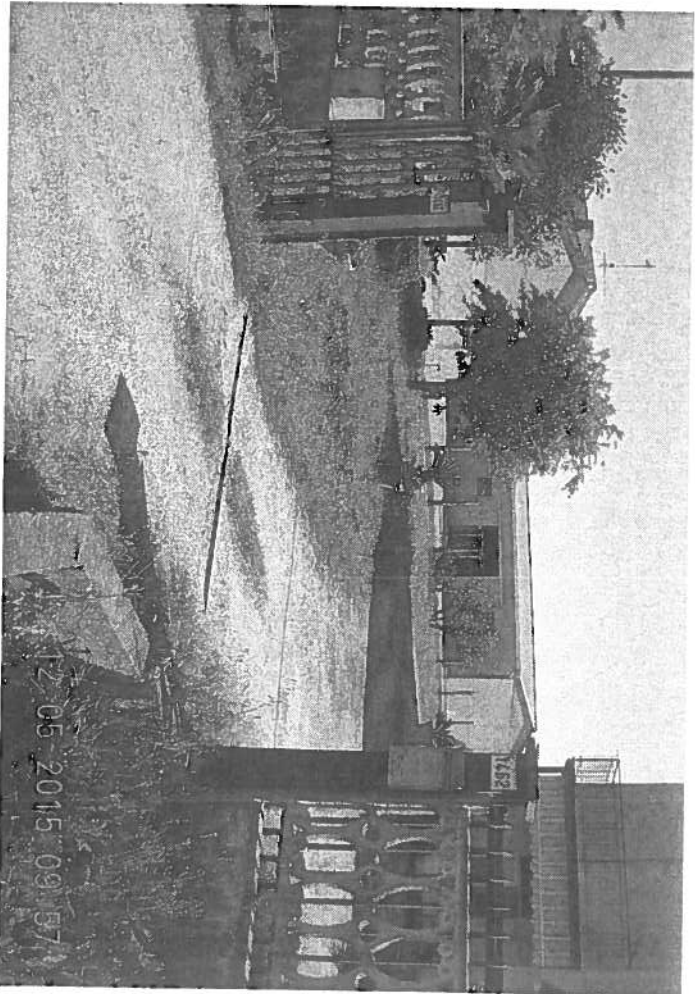
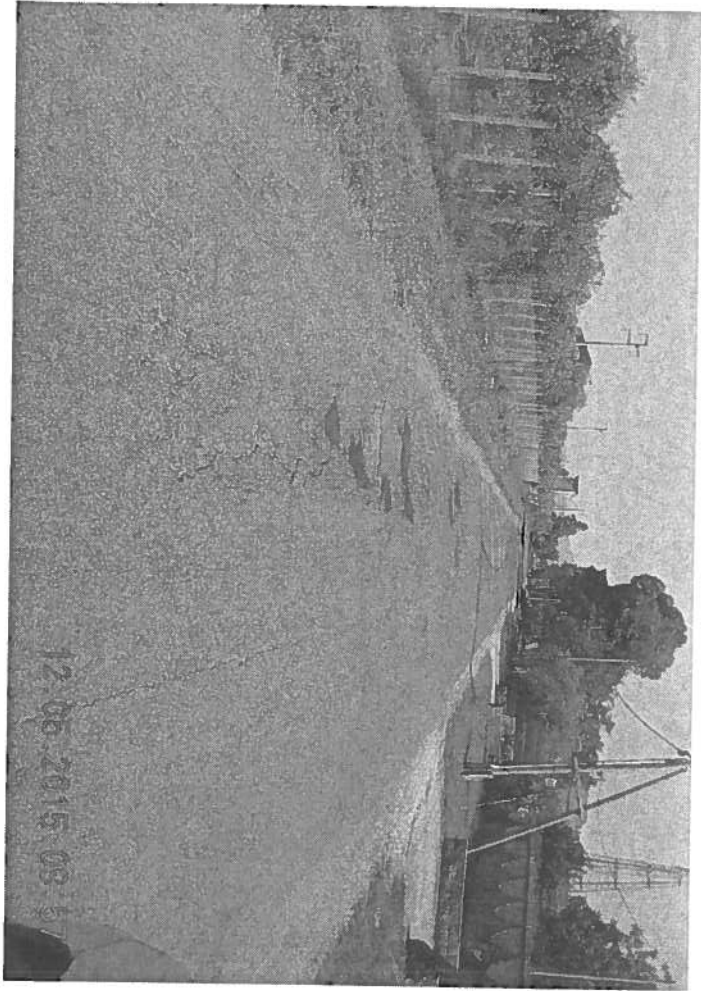
--

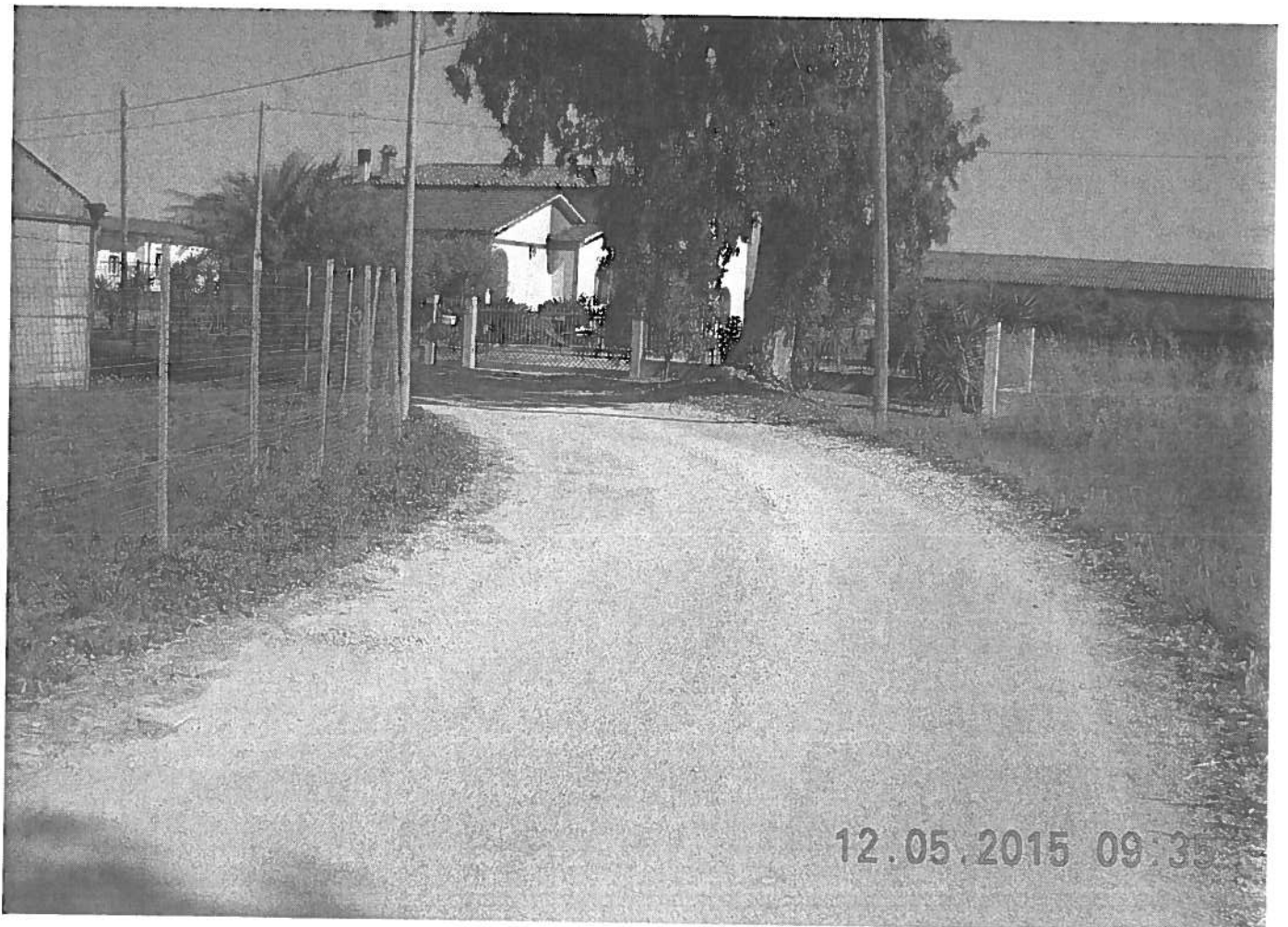


CASALINA WORD



VIA CAMPONIVO



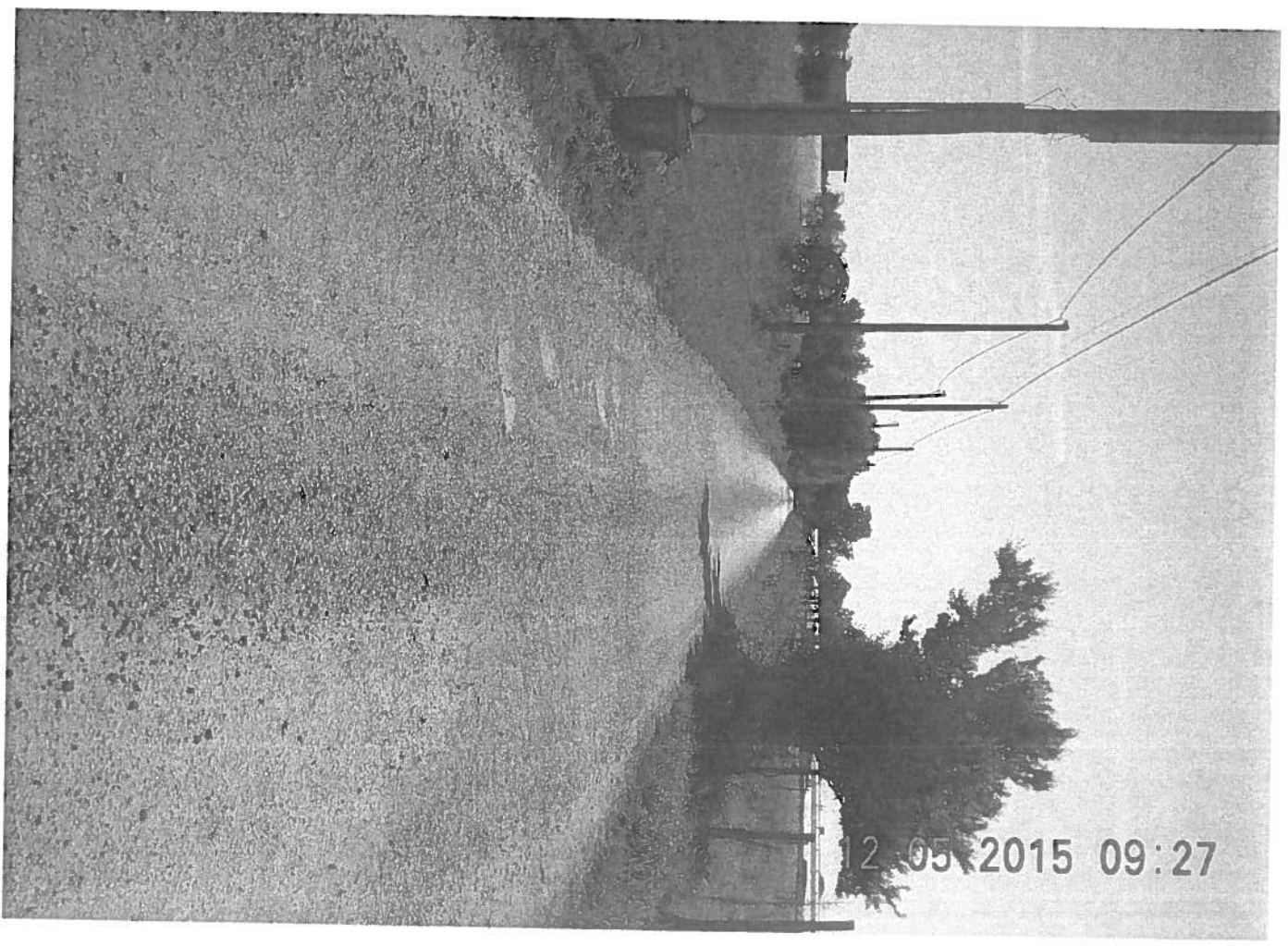


VIA CAUUNETO DI RODI

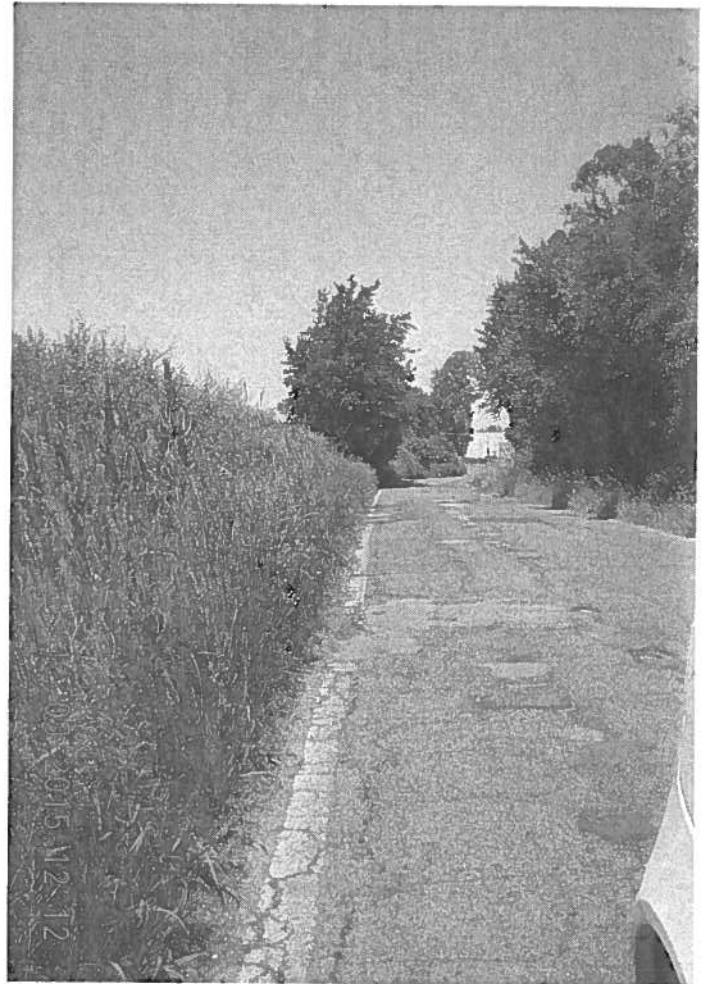
12.05.2015 09:27



12.05.2015 09:27



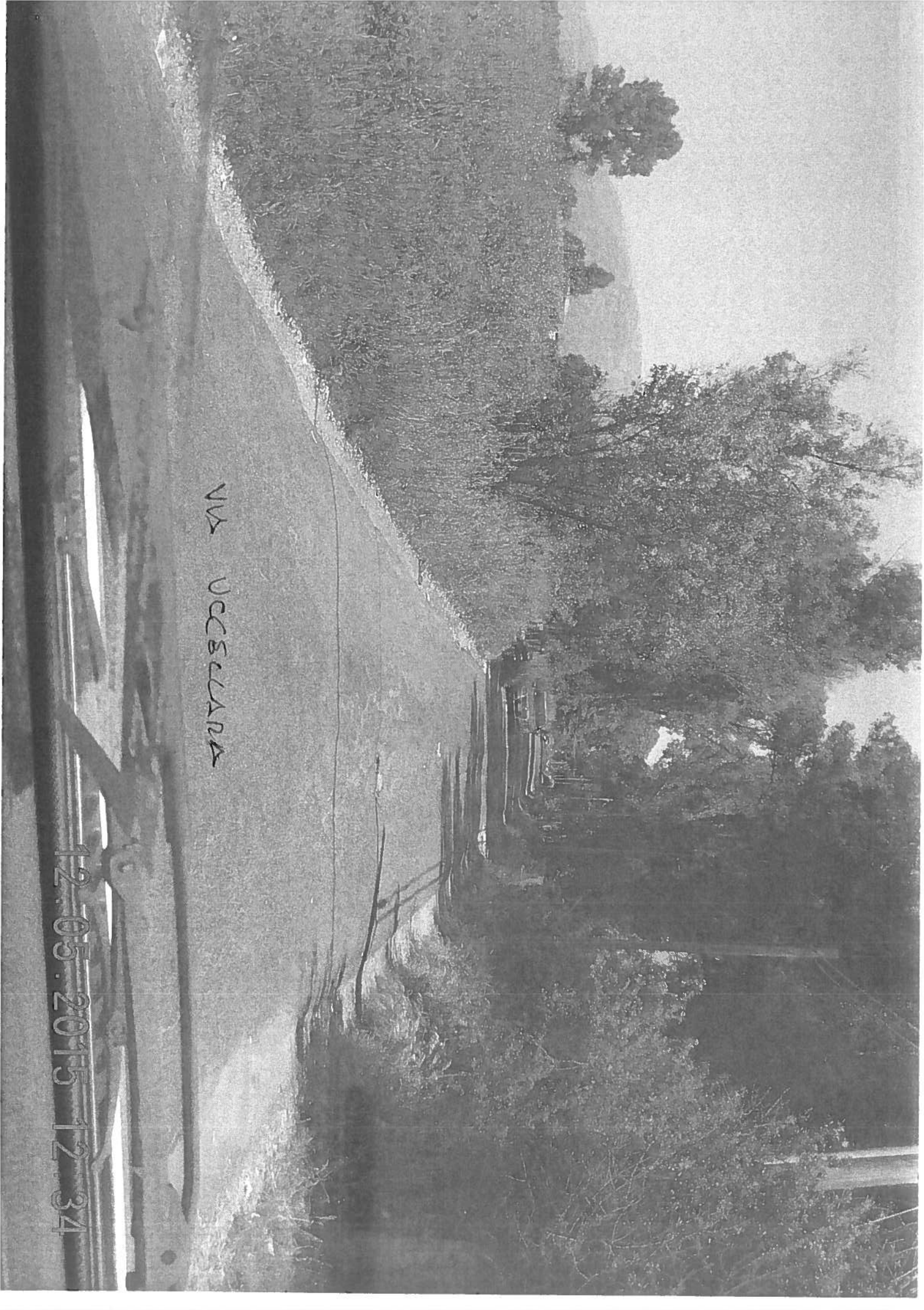
ВН
САНКТУ
НИ
НОАИ



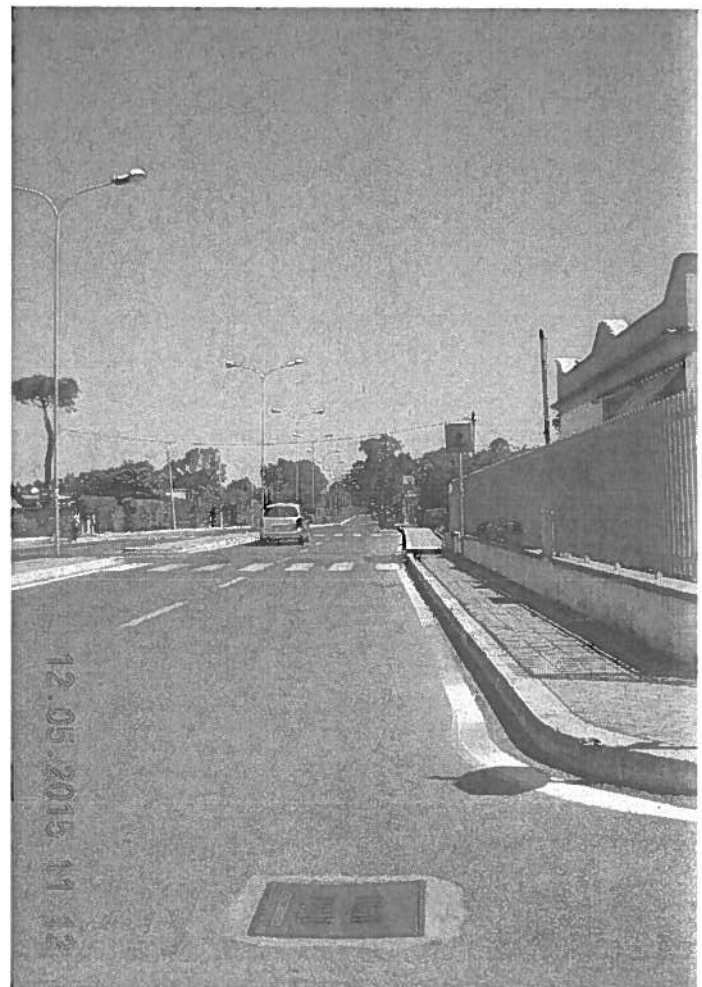
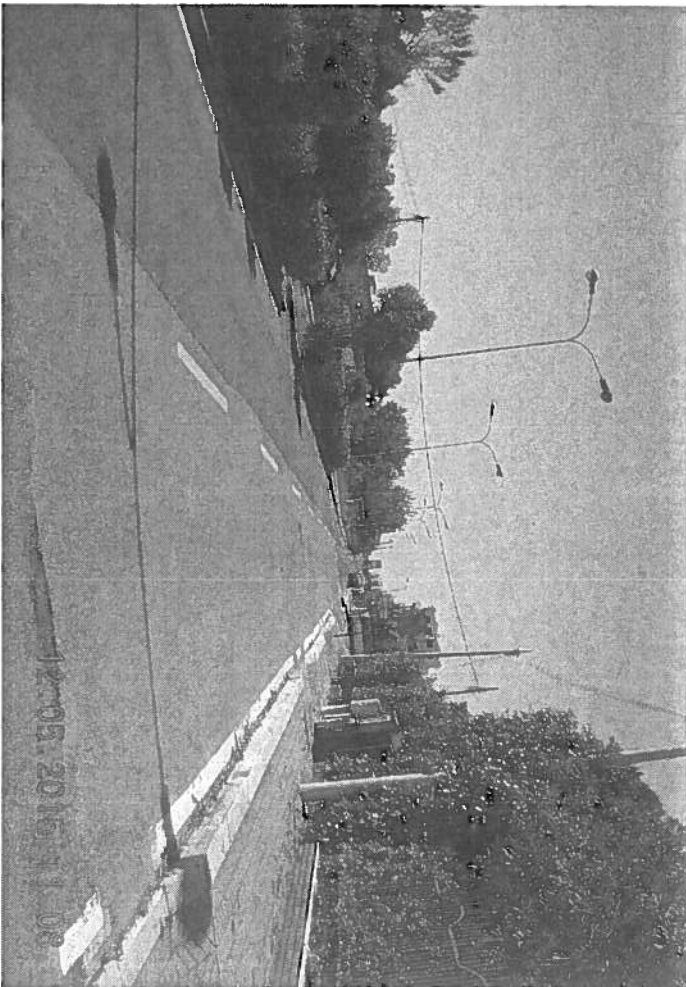
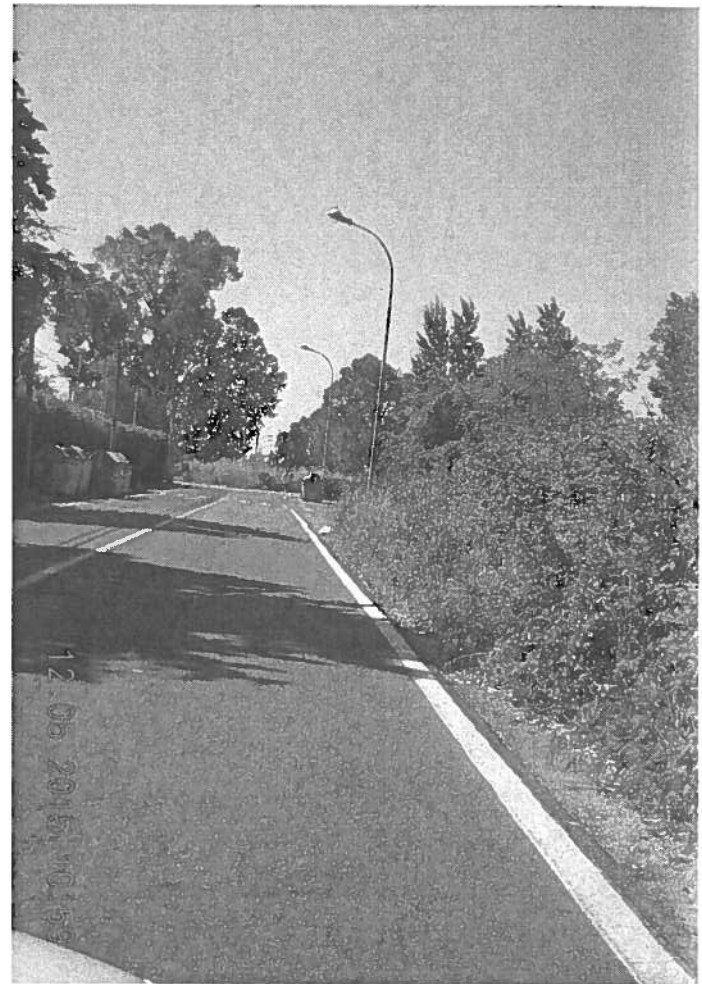
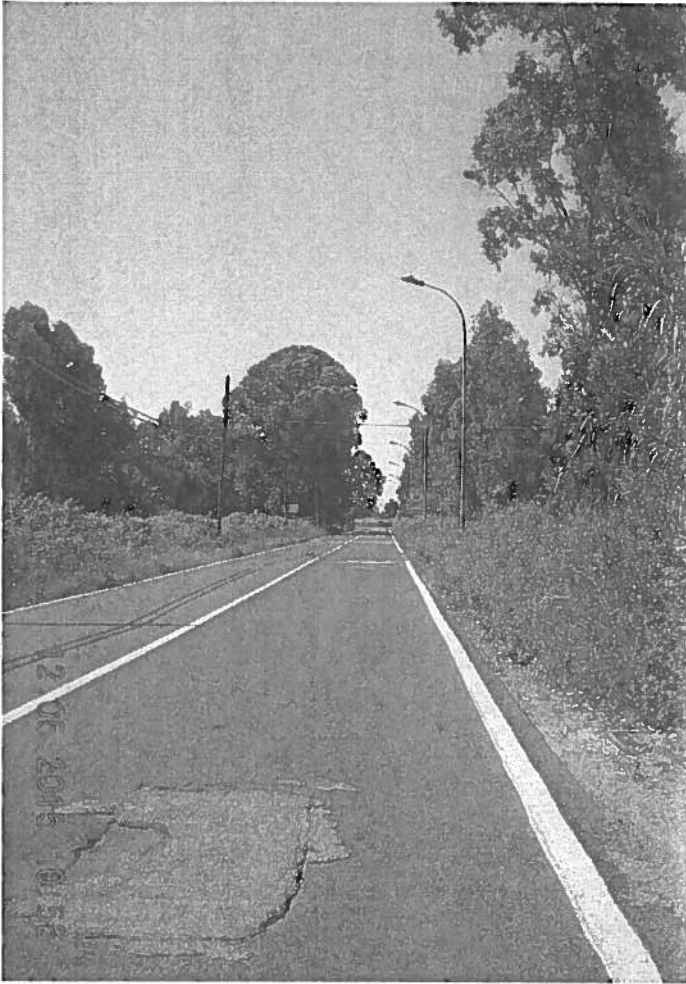
VIA TORRENUOVA

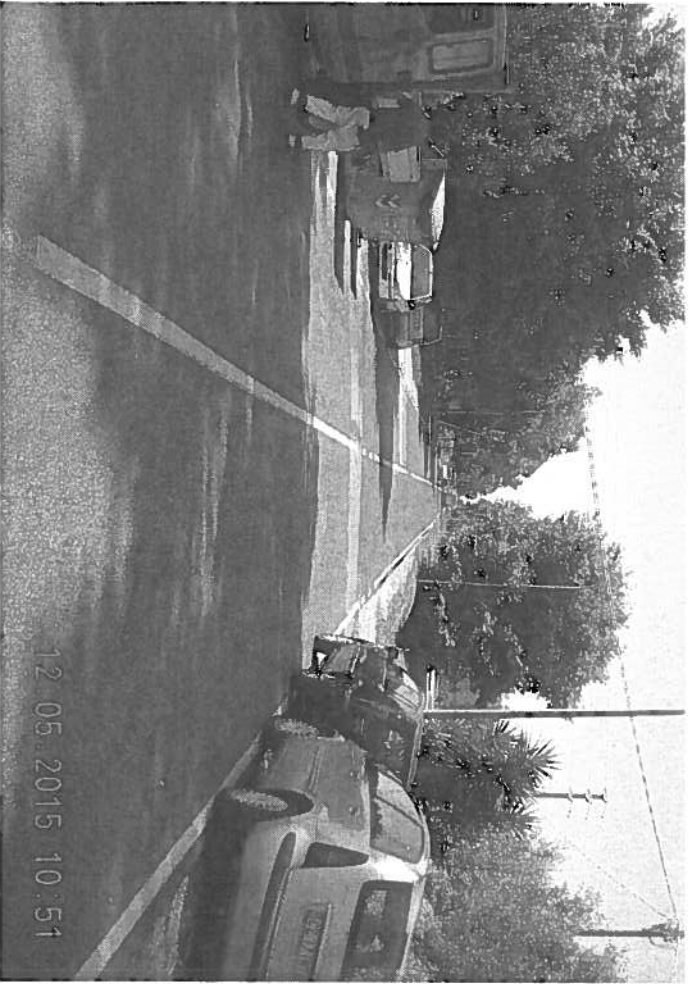
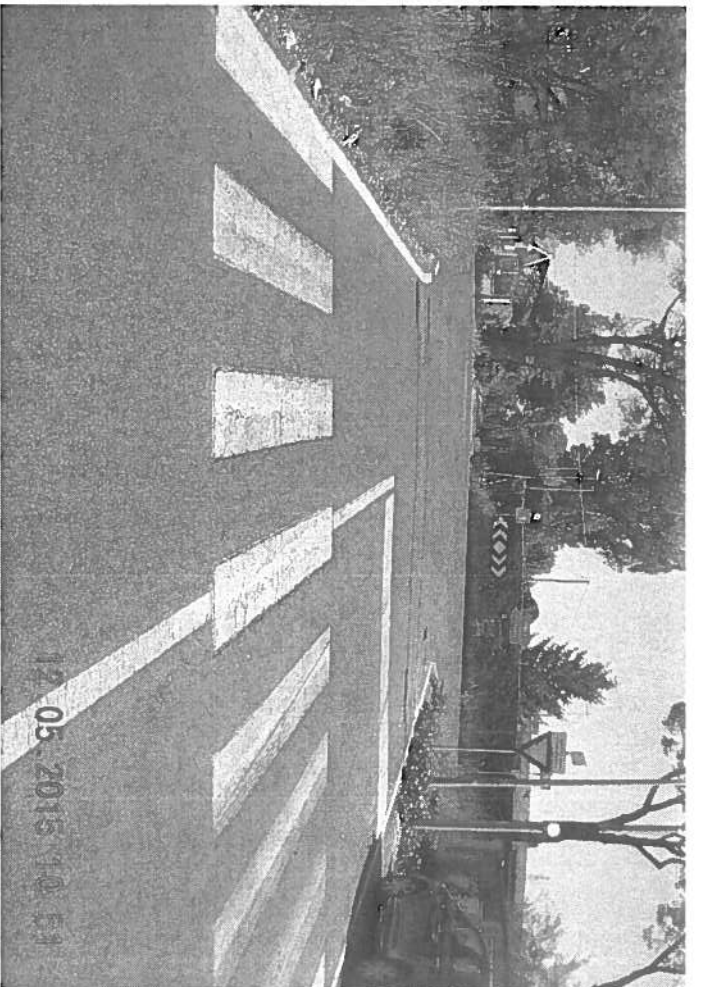
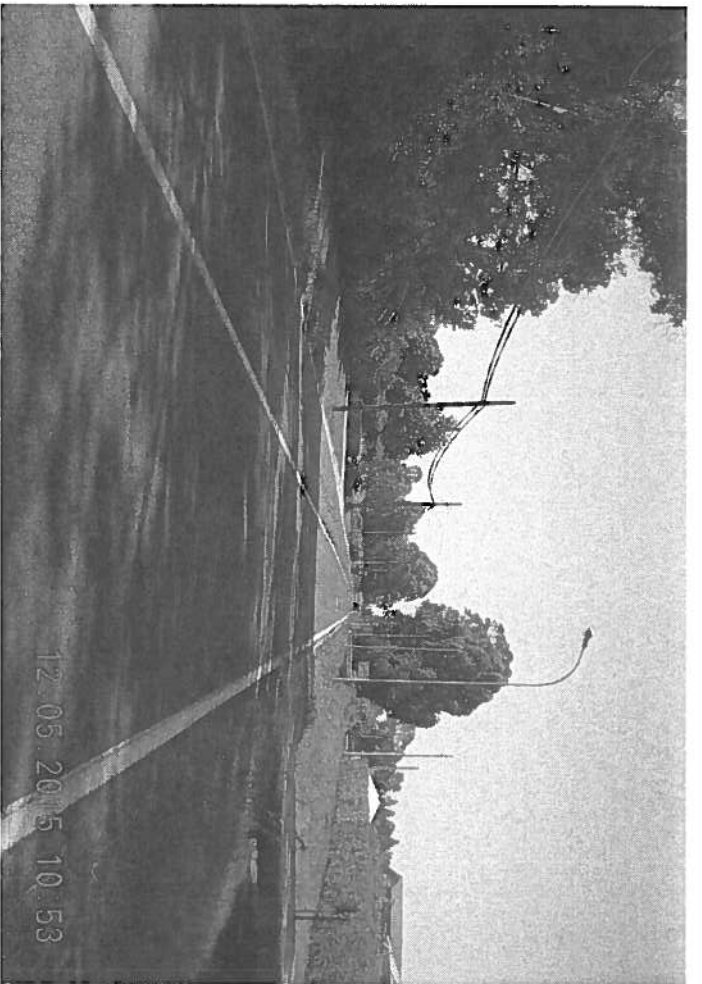
VIA UCCISCIANA

12.05.2015 12.34



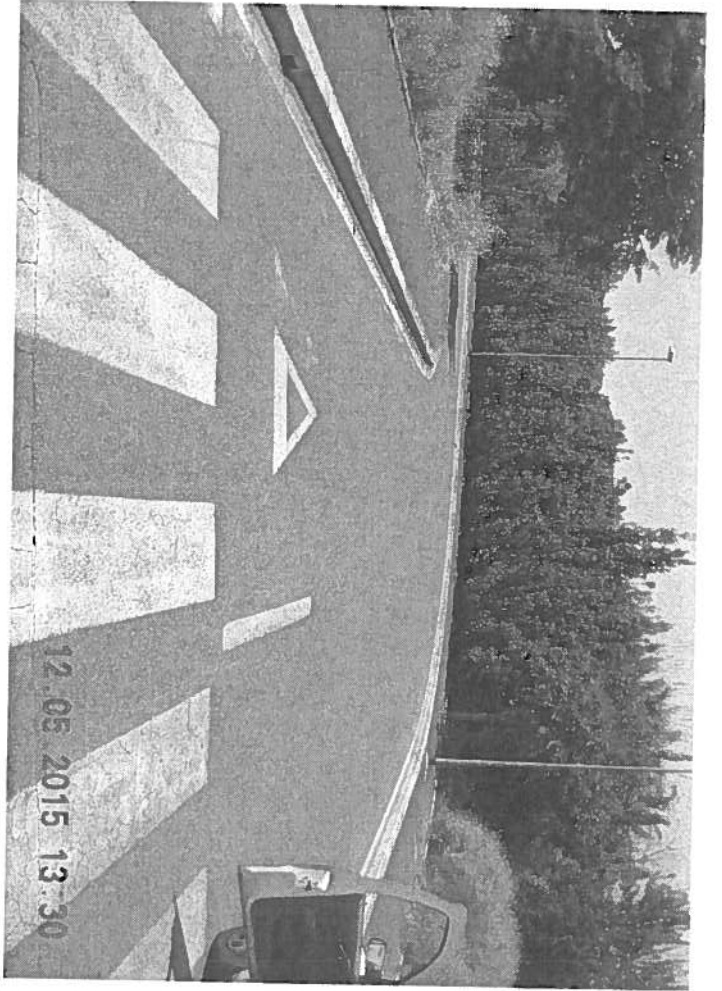
VIA CASALINA SUD



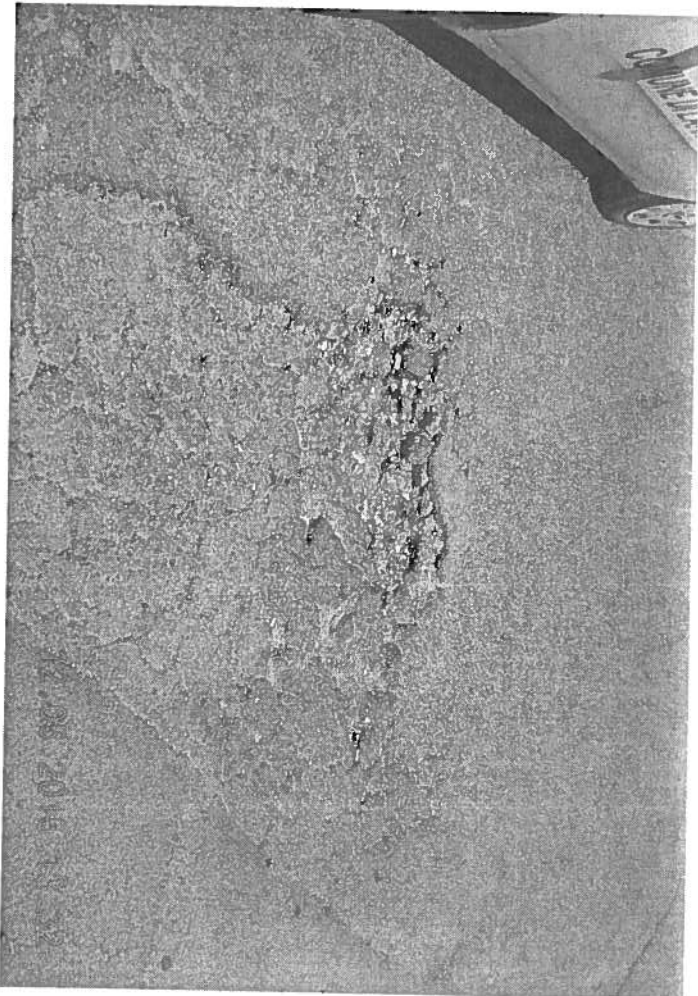
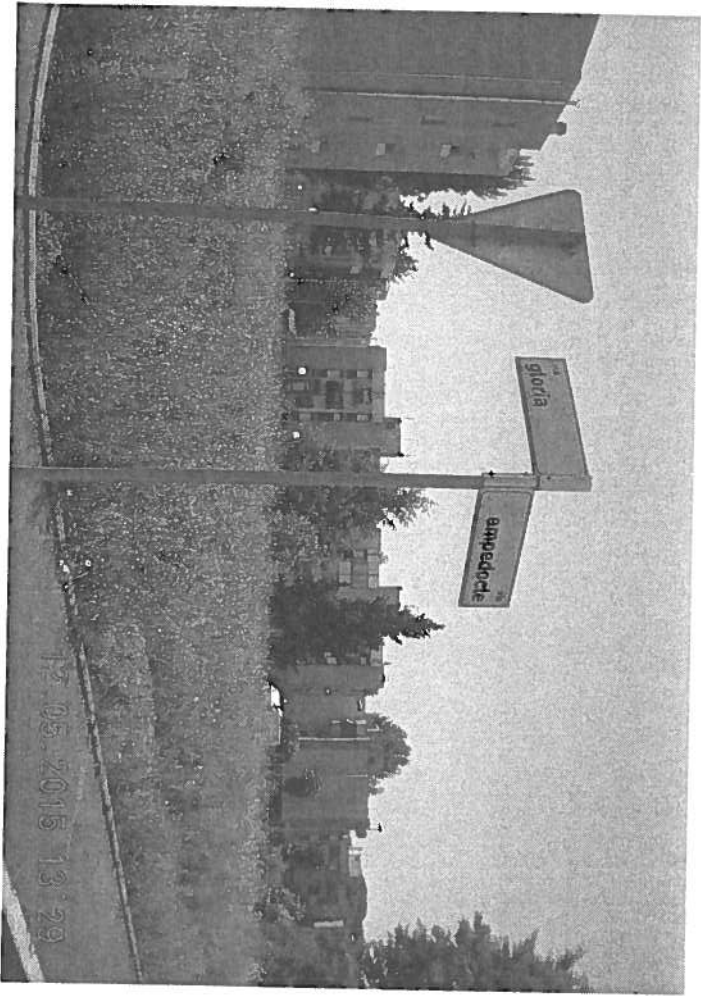


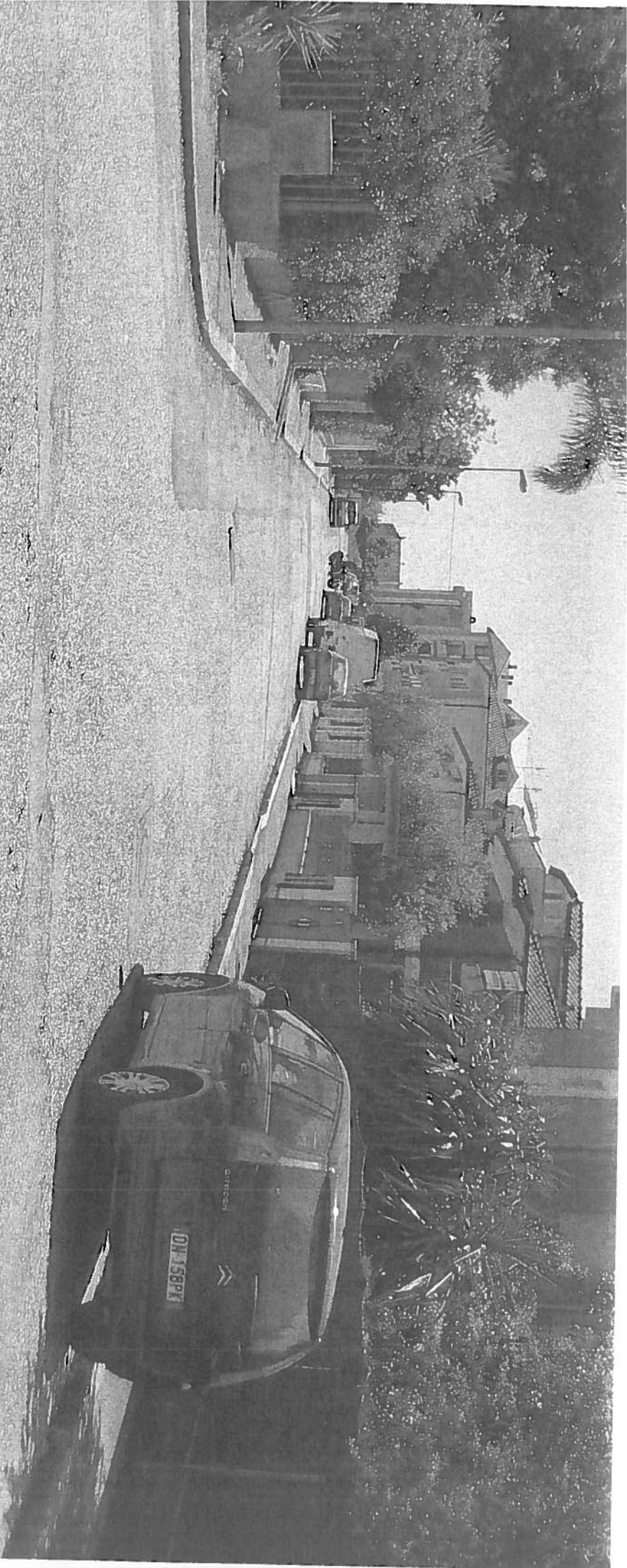
VIA CASALINA

80D



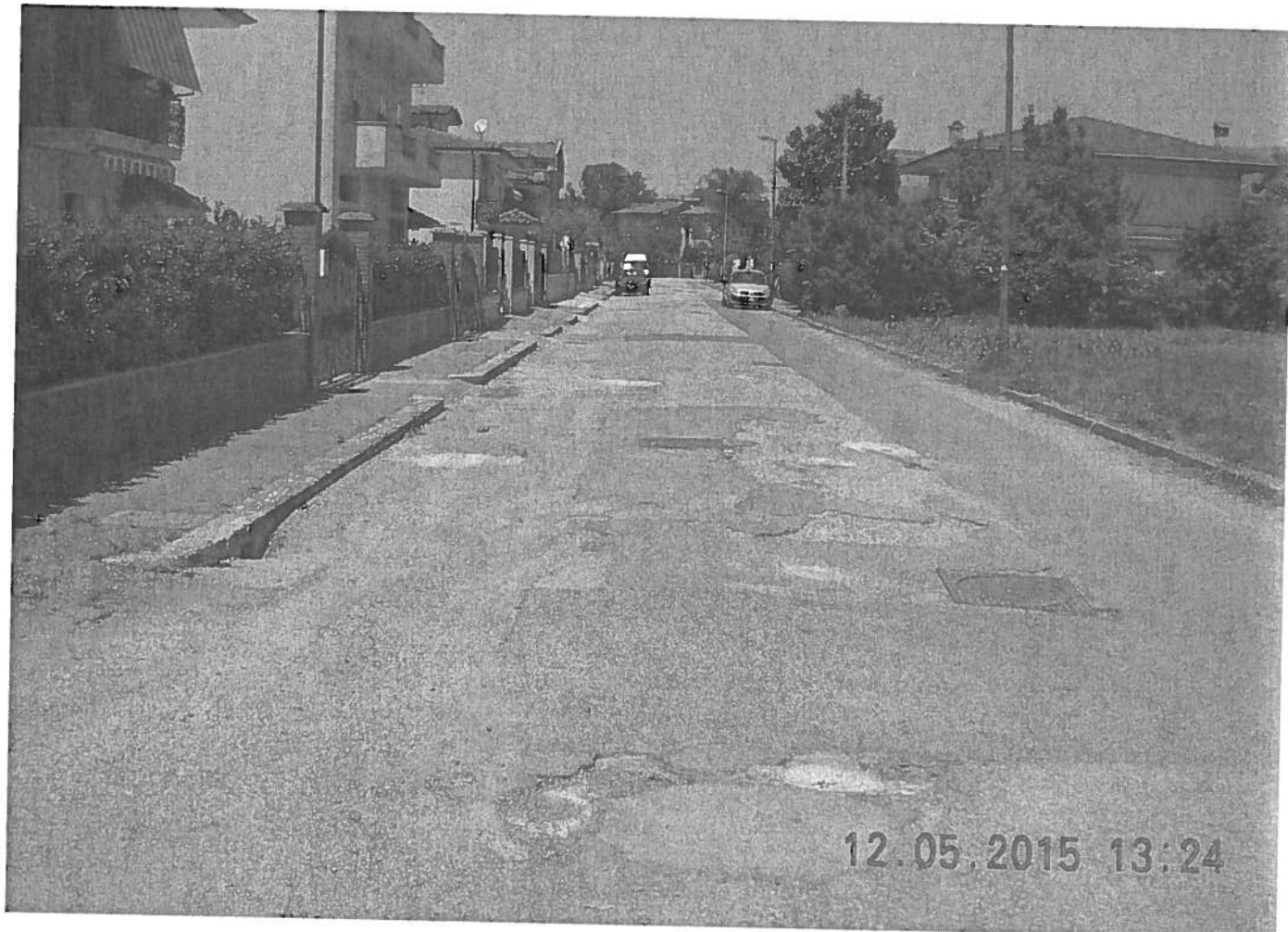
N/A EMPERORCS





UV BETA VIOLA

12.05.2015 13:27

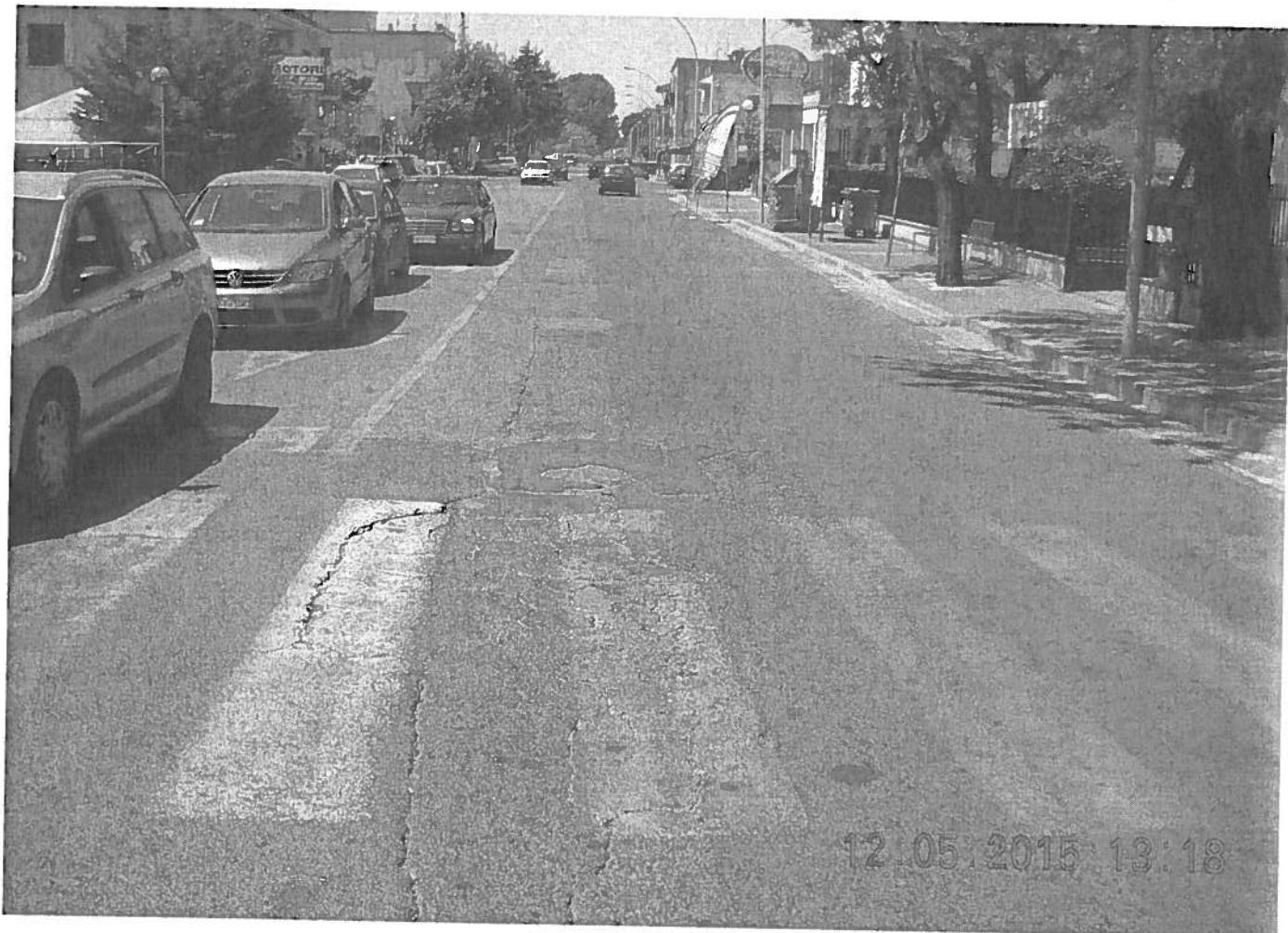


12.05.2015 13:24

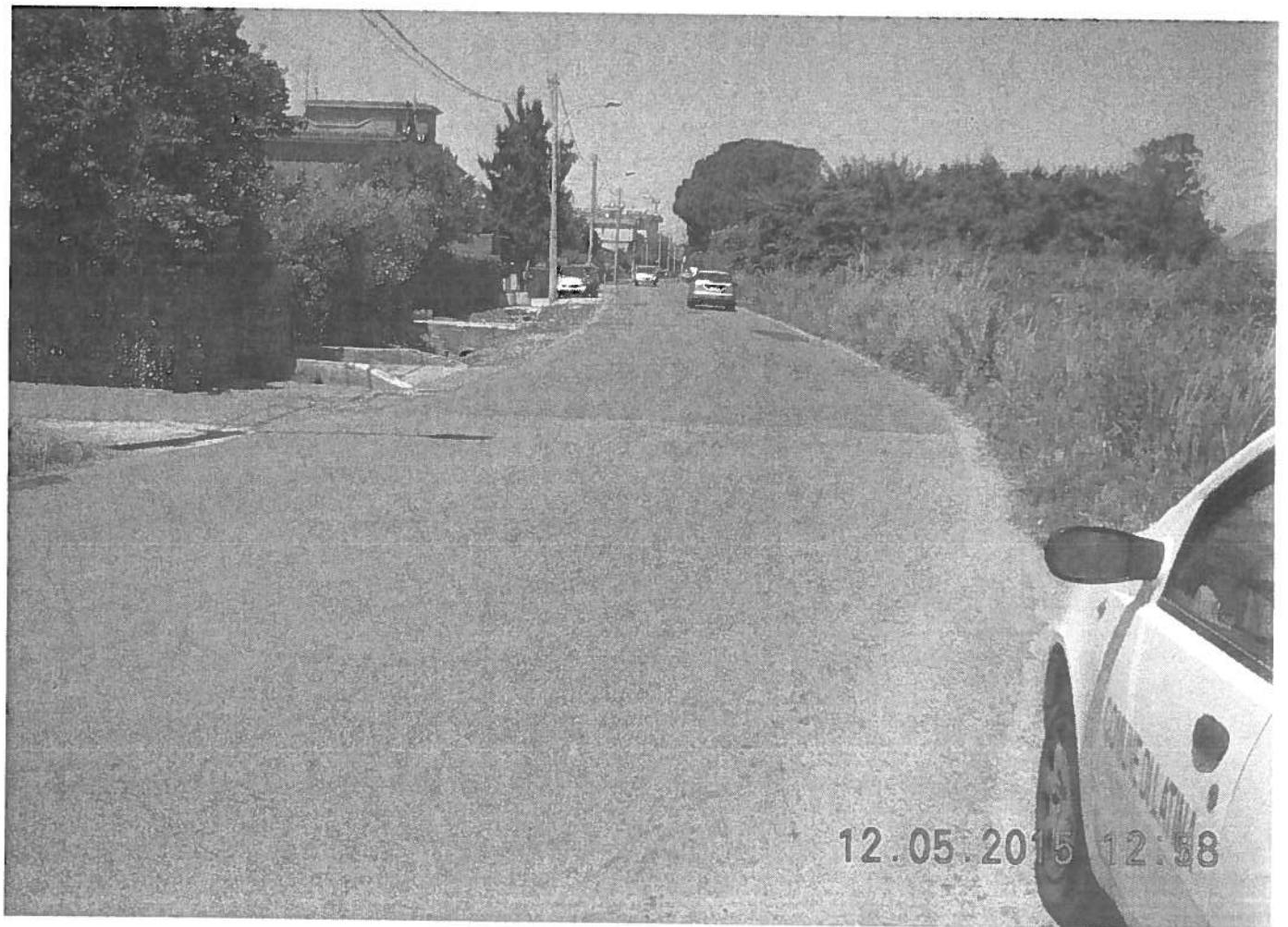
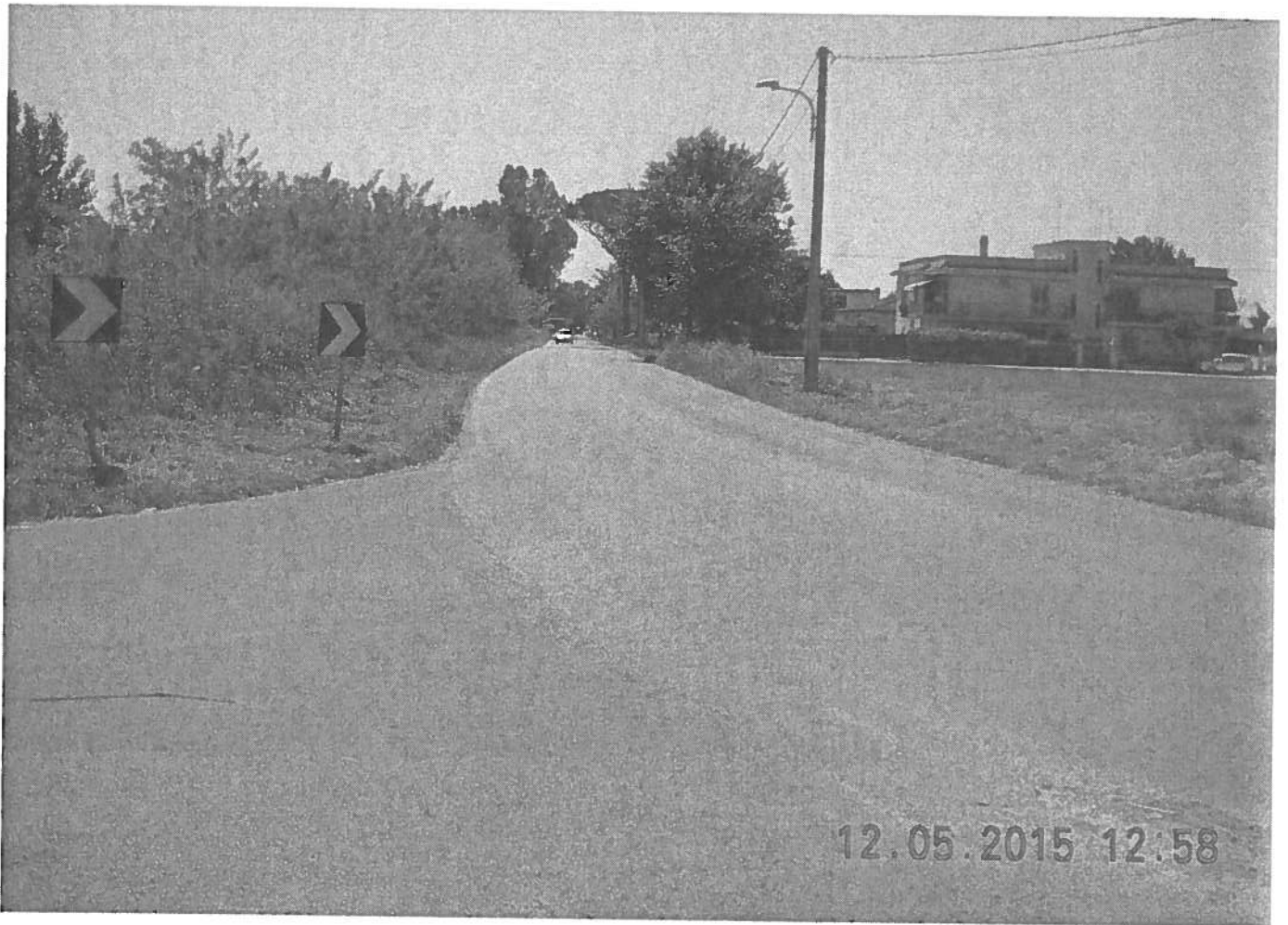


12.05.2015 13:27

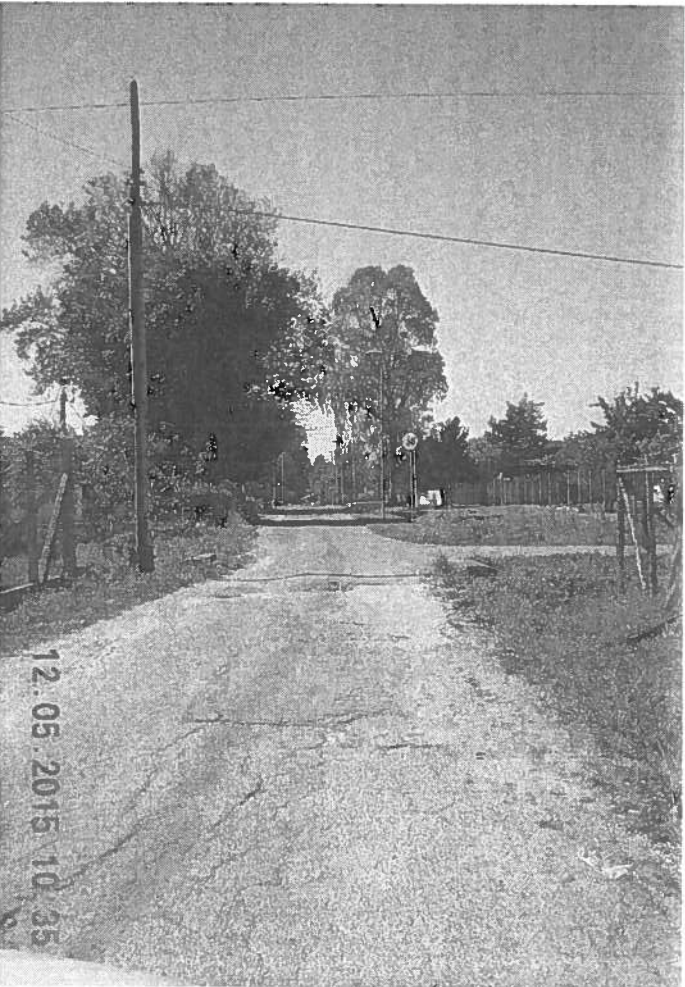
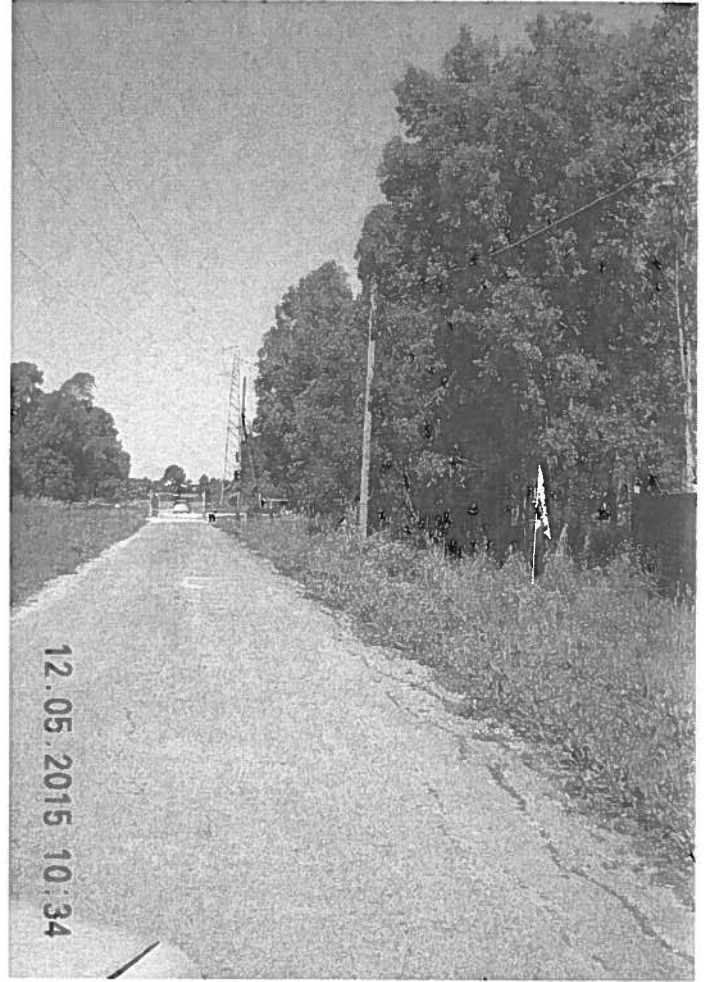
VIA DELLA VIOLA



7/22A SA4 GIUSEPPE - MUMILLO



VIA CARRARA, COMPETENZA COMUNALE



~~XXXXXXXXXXXXXXXXXXXX~~
VA OCCASNELLI